

\$635,000 - 161 West Lakeview Drive, Chestermere

MLS® #A2257185

\$635,000

5 Bedroom, 3.00 Bathroom, 1,352 sqft

Residential on 0.15 Acres

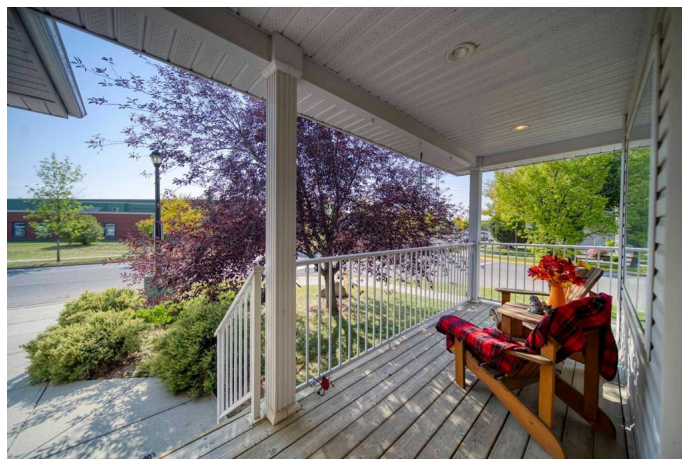
Lakeview Landing, Chestermere, Alberta

Open House Saturday Sept 20, 2-4 pm 1352 SQ FT bungalow with RV parking for sale in Chestermere. This spacious home features five bedrooms and three bathrooms, with a 21 x 20 attached garage, and sits on a large, fully fenced corner lot (6,790 sq. ft.) The main living area includes a cozy gas fireplace—perfect for relaxing evenings—and a welcoming front veranda that adds charm and curb appeal. Ideally located for families, the home is directly across from the middle school and just 0.7 km from the elementary school. The backyard boasts a well-maintained vegetable garden, perfect for those who enjoy gardening or savoring fresh, homegrown produce. With RV parking, a prime location, and room for the whole family, this bungalow offers comfort, convenience, and space to grow.

Built in 2000

Essential Information

MLS® #	A2257185
Price	\$635,000
Bedrooms	5
Bathrooms	3.00
Full Baths	2
Half Baths	1
Square Footage	1,352
Acres	0.15
Year Built	2000



Type	Residential
Sub-Type	Detached
Style	Bungalow
Status	Active

Community Information

Address	161 West Lakeview Drive
Subdivision	Lakeview Landing
City	Chestermere
County	Chestermere
Province	Alberta
Postal Code	T1X 1H7

Amenities

Utilities	Cable Available, Electricity Connected, Natural Gas Connected, High Speed Internet Available, Phone Connected, Water Connected
Parking Spaces	5
Parking	Double Garage Attached, RV Access/Parking
# of Garages	2

Interior

Interior Features	High Ceilings, Jetted Tub, No Animal Home, No Smoking Home
Appliances	Dryer, Electric Range, Electric Stove, Garage Control(s), Microwave Hood Fan, Washer, Window Coverings
Heating	Forced Air, Natural Gas
Cooling	None
Fireplace	Yes
# of Fireplaces	1
Fireplaces	Gas, Oak
Has Basement	Yes
Basement	Finished, Full

Exterior

Exterior Features	Fire Pit, Private Yard, Storage
Lot Description	Back Yard, City Lot, Corner Lot, Landscaped, See Remarks
Roof	Asphalt Shingle
Construction	Wood Frame
Foundation	Poured Concrete

Additional Information

Date Listed	September 15th, 2025
Days on Market	3
Zoning	R1

Listing Details

Listing Office	RE/MAX Real Estate (Mountain View)
----------------	------------------------------------

Data is supplied by Pillar 9â„¢ MLS® System. Pillar 9â„¢ is the owner of the copyright in its MLS® System. Data is deemed reliable but is not guaranteed accurate by Pillar 9â„¢. The trademarks MLS®, Multiple Listing Service® and the associated logos are owned by The Canadian Real Estate Association (CREA) and identify the quality of services provided by real estate professionals who are members of CREA. Used under license.