

# \$474,900 - 25 Southborough Lane, Cochrane

MLS® #A2254461

**\$474,900**

3 Bedroom, 3.00 Bathroom, 1,213 sqft  
Residential on 0.06 Acres

Southbow Landing, Cochrane, Alberta

Meet The Brisbane â€” by Douglas Homes

This masterfully built semi-detached home in Southbow Landing combines modern design with everyday comfort. Offering just under 1,200 sqft of living space, 3 bedrooms, 2.5 baths, and a full undeveloped basement with side entry, this home is designed to grow with you. With a great floor plan this home is waiting for you to make your mark.

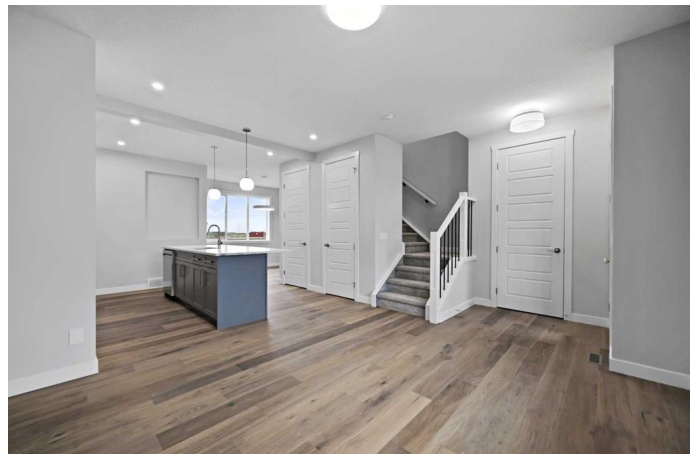
Main Floor Highlights include a bright, open concept great room with built-in electric fireplace

There is a stunning kitchen featuring 42â€• full-height soft-close cabinets, luxurious quartz countertops, and a stainless steel appliance package. 9â€™ ceilings, 8â€™ doors, and premium engineered hardwood flooring throughout main living areas.

The Upper Level Retreat has a primary suite with walk-in closet and private 3 piece ensuite  
Two additional bedrooms plus a spacious 4-piece main bath

Added Features of this home include a Two car concrete parking pad ready and poured for your new garage. The home has a Separate basement side entry for future suite potential or extra flexibility with approval from the town of Cochrane.

This home is Located in the new community



Southbow Landing which is one of Cochrane’s newest, most exciting communities!

Estimated completion: Early October 2025  
Photos shown are of a similar unit and are representative of the floor plan, features, and finishes. This home’s final interior selections may differ slightly.

Please come by show home Monday to Thursday 2-8pm and Saturday and Sunday 12-5 pm to have a tour of this home.

Built in 2024

**Essential Information**

MLS® #	A2254461
Price	\$474,900
Bedrooms	3
Bathrooms	3.00
Full Baths	2
Half Baths	1
Square Footage	1,213
Acres	0.06
Year Built	2024
Type	Residential
Sub-Type	Semi Detached
Style	2 Storey, Side by Side
Status	Active

**Community Information**

Address	25 Southborough Lane
Subdivision	Southbow Landing
City	Cochrane
County	Rocky View County
Province	Alberta
Postal Code	T4C 3J4

**Amenities**

Parking Spaces	2
Parking	Parking Pad

## Interior

Interior Features	High Ceilings, Kitchen Island, No Animal Home, No Smoking Home, Open Floorplan, Pantry, Quartz Counters, Recessed Lighting, Separate Entrance, Soaking Tub, Walk-In Closet(s)
Appliances	Dishwasher, Electric Stove, Microwave Hood Fan, Refrigerator
Heating	Forced Air, Natural Gas
Cooling	None
Fireplace	Yes
# of Fireplaces	1
Fireplaces	Electric
Has Basement	Yes
Basement	Exterior Entry, Full, Unfinished

## Exterior

Exterior Features	None
Lot Description	Back Lane, Back Yard, Front Yard
Roof	Asphalt
Construction	Vinyl Siding, Wood Frame
Foundation	Poured Concrete

## Additional Information

Date Listed	September 13th, 2025
Days on Market	1
Zoning	R-MX

## Listing Details

Listing Office	Real Broker
----------------	-------------

Data is supplied by Pillar 9â„¢ MLS® System. Pillar 9â„¢ is the owner of the copyright in its MLS® System. Data is deemed reliable but is not guaranteed accurate by Pillar 9â„¢. The trademarks MLS®, Multiple Listing Service® and the associated logos are owned by The Canadian Real Estate Association (CREA) and identify the quality of services provided by real estate professionals who are members of CREA. Used under license.