

# \$510,000 - 149 Ranch Rise, Strathmore

MLS® #A2252230

**\$510,000**

3 Bedroom, 3.00 Bathroom, 1,388 sqft  
Residential on 0.09 Acres

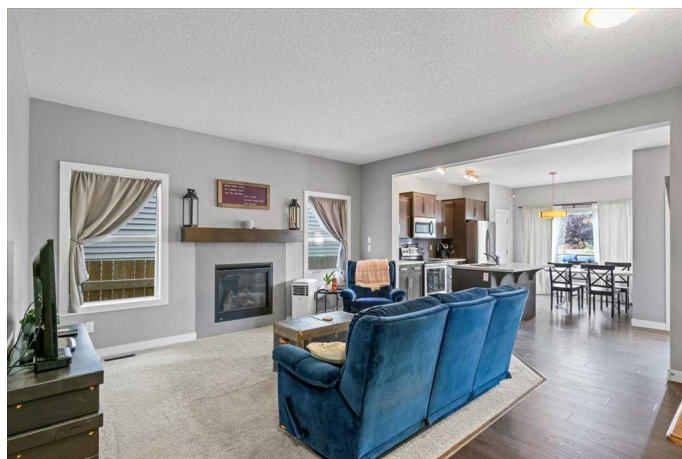
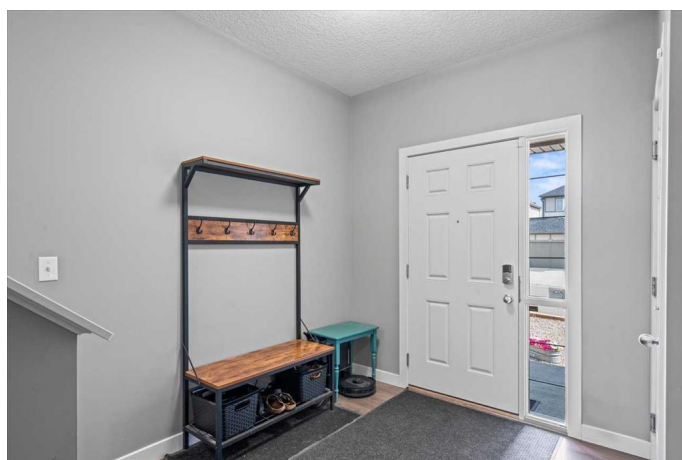
Ranch Estates, Strathmore, Alberta

Check out this very well kept home by Westview builders. The Home offers 1,388 sq.ft. of stylish living space tucked away on a quiet cul-de-sac. The main floor showcases a bright great room with cozy gas fireplace, open kitchen with pantry, center island and eating bar, plus dining area with garden doors to a large deck, a dog run in a fenced yard. Upstairs features two bedrooms, full bath, laundry and a private primary retreat with walk-in closet and 4-piece ensuite bath. The basement is already framed with electrical completed, ready for your finishing touches. This energy-efficient home is perfectly located close to parks, schools, walking/biking paths and within walking distance to shops and restaurants. Outside, the front yard is totally maintenance-free with artificial turf and decorative gravel â€” no mowing required. A true move-in ready gem in a walkable, family-friendly location! Double Heated garage and RV parking is allowed in driveway!

Built in 2015

## Essential Information

MLS® #	A2252230
Price	\$510,000
Bedrooms	3
Bathrooms	3.00
Full Baths	2
Half Baths	1



Square Footage	1,388
Acres	0.09
Year Built	2015
Type	Residential
Sub-Type	Semi Detached
Style	2 Storey, Side by Side
Status	Active

### **Community Information**

Address	149 Ranch Rise
Subdivision	Ranch Estates
City	Strathmore
County	Wheatland County
Province	Alberta
Postal Code	T1P 1P1

### **Amenities**

Parking Spaces	4
Parking	Double Garage Attached
# of Garages	2

### **Interior**

Interior Features	Bathroom Rough-in, No Animal Home, No Smoking Home, See Remarks
Appliances	Dishwasher, Electric Stove, Garage Control(s), Microwave Hood Fan, Refrigerator, Window Coverings
Heating	Forced Air, Natural Gas
Cooling	None
Fireplace	Yes
# of Fireplaces	1
Fireplaces	Gas
Has Basement	Yes
Basement	Full, Unfinished

### **Exterior**

Exterior Features	Dog Run
Lot Description	Cul-De-Sac, Low Maintenance Landscape, Rectangular Lot
Roof	Asphalt Shingle
Construction	Vinyl Siding, Wood Frame, Wood Siding

Foundation                  Poured Concrete

### **Additional Information**

Date Listed                  August 29th, 2025

Days on Market            1

Zoning                        R2

### **Listing Details**

Listing Office              CIR Realty

Data is supplied by Pillar 9â„¢ MLS® System. Pillar 9â„¢ is the owner of the copyright in its MLS® System. Data is deemed reliable but is not guaranteed accurate by Pillar 9â„¢. The trademarks MLS®, Multiple Listing Service® and the associated logos are owned by The Canadian Real Estate Association (CREA) and identify the quality of services provided by real estate professionals who are members of CREA. Used under license.