

# \$428,500 - 137 Bridlewood Lane Sw, Calgary

MLS® #A2246260

**\$428,500**

4 Bedroom, 3.00 Bathroom, 1,654 sqft  
Residential on 0.03 Acres

Bridlewood, Calgary, Alberta

Over 1,600 sq. ft.! Affordable 4-Bedroom  
Townhome in Bridlewood

Spacious and versatile, this well-kept townhome offers over 1,600 sq. ft. of living space with low condo fees. Featuring 4 bedrooms plus a flex room that can easily become a 5th bedroom, this home is perfect for growing families or those who need extra space.

The main floor boasts a cozy gas fireplace, while the large primary bedroom comes complete with its own 4-piece ensuite. Upstairs, youâ€™ll find two more bedrooms, another full 4-piece bathroom, and the convenience of upstairs laundry.

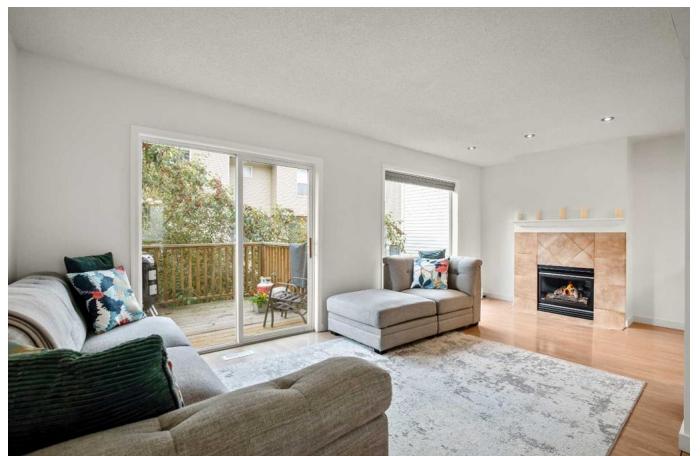
Enjoy the attached single garage with additional driveway parking, and soak up the sun on your bright south-facing patio.

Located in the heart of Bridlewood, youâ€™re close to schools, parks, shopping, and public transit.

Donâ€™t miss this affordable opportunity to own a 4-bedroom, 2.5-bathroom townhome in a fantastic community!

Built in 1999

## Essential Information



MLS® #	A2246260
Price	\$428,500
Bedrooms	4
Bathrooms	3.00
Full Baths	2
Half Baths	1
Square Footage	1,654
Acres	0.03
Year Built	1999
Type	Residential
Sub-Type	Row/Townhouse
Style	3 Level Split
Status	Active

### Community Information

Address	137 Bridlewood Lane Sw
Subdivision	Bridlewood
City	Calgary
County	Calgary
Province	Alberta
Postal Code	T2Y3X8

### Amenities

Amenities	Snow Removal, Trash, Visitor Parking
Parking Spaces	2
Parking	Driveway, Front Drive, Garage Door Opener, Garage Faces Front, Guest, Parking Pad, Single Garage Attached
# of Garages	1

### Interior

Interior Features	No Animal Home, No Smoking Home, Vinyl Windows
Appliances	Dishwasher, Electric Stove, Garage Control(s), Refrigerator, Washer/Dryer, Window Coverings
Heating	Forced Air, Natural Gas
Cooling	None
Fireplace	Yes
# of Fireplaces	1
Fireplaces	Family Room, Gas, Mantle, Tile
Basement	None

## Exterior

Exterior Features	Balcony, Private Entrance
Lot Description	Brush
Roof	Asphalt Shingle
Construction	Vinyl Siding, Wood Frame
Foundation	Poured Concrete

## Additional Information

Date Listed	August 7th, 2025
Days on Market	14
Zoning	M-1 d75

## Listing Details

Listing Office	Park Real Estate Associates Inc.
----------------	----------------------------------

Data is supplied by Pillar 9â,,ç MLSÂ® System. Pillar 9â,,ç is the owner of the copyright in its MLSÂ® System. Data is deemed reliable but is not guaranteed accurate by Pillar 9â,,ç. The trademarks MLSÂ®, Multiple Listing ServiceÂ® and the associated logos are owned by The Canadian Real Estate Association (CREA) and identify the quality of services provided by real estate professionals who are members of CREA. Used under license.