

\$205,000 - 402, 1202 13 Avenue Sw, Calgary

MLS® #A2245343

\$205,000

1 Bedroom, 1.00 Bathroom, 700 sqft
Residential on 0.00 Acres

Beltline, Calgary, Alberta

Come view the Quiet one bedroom apartment in reinforced concrete building adjacent park. Good open view of downtown Calgary and school park. Close to downtown (5-10 minutes walking distance), Schools, daycare and Safeway and Coop are all blocks away. Very quiet. Well managed building, Handyman Special but interior with porcelain mosaic tile and Brazilian Cherry Engineered hardwood flooring. Washer/dryer machine in unit. Breakfast bar, Storage room

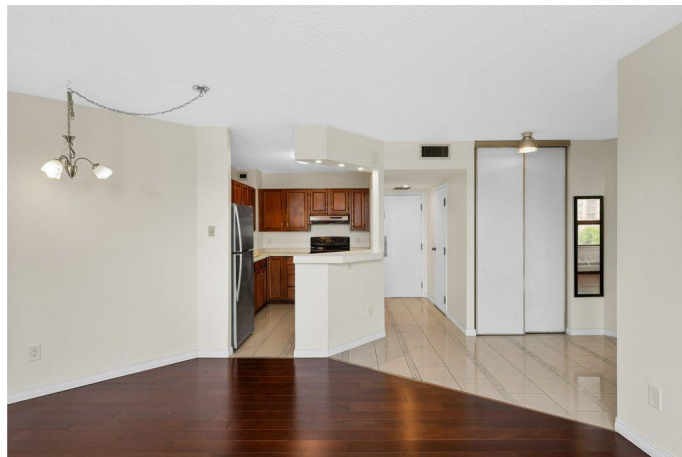
Built in 1981

Essential Information

MLS® #	A2245343
Price	\$205,000
Bedrooms	1
Bathrooms	1.00
Full Baths	1
Square Footage	700
Acres	0.00
Year Built	1981
Type	Residential
Sub-Type	Apartment
Style	Single Level Unit
Status	Active

Community Information

Address	402, 1202 13 Avenue Sw
Subdivision	Beltline



City	Calgary
County	Calgary
Province	Alberta
Postal Code	T3C 0T1

Amenities

Amenities	Elevator(s), Parking
Parking Spaces	1
Parking	Parkade

Interior

Interior Features	Laminate Counters, No Smoking Home, Open Floorplan
Appliances	Dishwasher, Electric Stove, Range Hood, Refrigerator, Washer/Dryer Stacked
Heating	Baseboard, Boiler, Natural Gas
Cooling	None
# of Stories	7

Exterior

Exterior Features	None
Roof	Membrane
Construction	Brick, Concrete
Foundation	Poured Concrete

Additional Information

Date Listed	July 29th, 2025
Days on Market	21
Zoning	CC-MHX

Listing Details

Listing Office	Hope Street Real Estate Corp.
----------------	-------------------------------

Data is supplied by Pillar 9â„¢ MLSÂ® System. Pillar 9â„¢ is the owner of the copyright in its MLSÂ® System. Data is deemed reliable but is not guaranteed accurate by Pillar 9â„¢. The trademarks MLSÂ®, Multiple Listing ServiceÂ® and the associated logos are owned by The Canadian Real Estate Association (CREA) and identify the quality of services provided by real estate professionals who are members of CREA. Used under license.