

# \$848,000 - 137 Rainbow Falls Heath, Chestermere

MLS® #A2239432

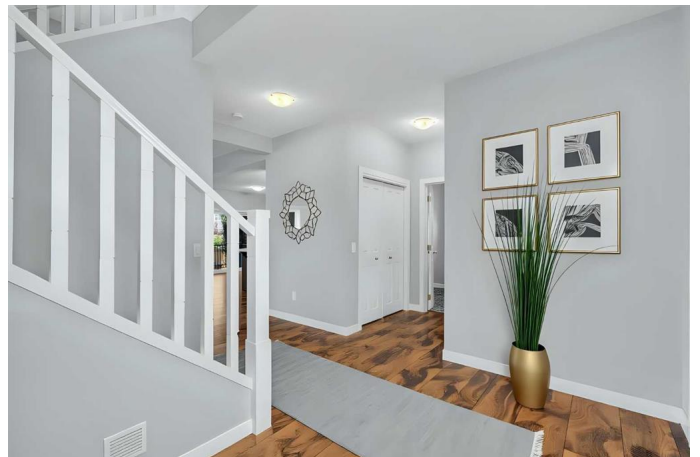
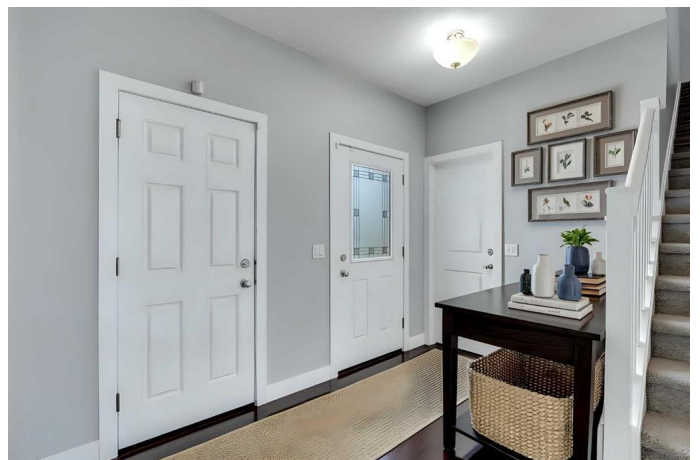
**\$848,000**

5 Bedroom, 4.00 Bathroom, 2,352 sqft

Residential on 0.14 Acres

Rainbow Falls, Chestermere, Alberta

Modern Elegance Meets Family Comfort in the Heart of Chestermere. Welcome to this stunning, fully developed two-story residence nestled on a peaceful street in desirable Chestermere. Offering over . 3,300 sq. ft. of thoughtfully designed living space, this home blends style, sophistication, and function in perfect harmony. From the moment you step inside, youâ€™re greeted by an open-concept layout bathed in natural light from expansive west-facing windows. The heart of the home is a chef-inspired kitchen featuring gleaming quartz countertops, an oversized island with contrasting finishes, upgraded appliances, soft-close cabinetry, a massive walk-in pantry, and abundant storage â€“ ideal for both everyday living and hosting unforgettable gatherings. A seamless transition leads to the spacious dining area, perfect for intimate family meals or elegant dinner parties. Step outside onto the large west-facing deck and take in the uninterrupted views and evening sunshine, with no direct neighbors behind. The main floor living room is both cozy and refined, showcasing a gas fireplace framed by a custom mantle and surrounded by oversized windows, creating the perfect space for entertaining or relaxing with loved ones. Upstairs, the thoughtful design continues with a large bonus room, convenient laundry room, two generous secondary bedrooms, and a beautifully appointed 4-piece bathroom. The primary retreat is truly exceptional, featuring a luxurious 5-piece ensuite with dual vanities,



glass-enclosed shower, deep soaker tub, and a spacious walk-in closet.

The fully finished basement expands your living space even further with a 4th bedroom, modern 3-piece bathroom, a dedicated home theatre areaâ€” perfect for family movie nights â€” and ample storage throughout. Additional highlights include: Central A/C for year-round comfort

Oversized double attached garage (22â€™x20â€™) Central vacuum rough-in, Low-maintenance landscaping, Sunny southwest-facing backyard on a generous lot with privacy and space to enjoy

Lovingly maintained and move-in ready, this home is a true standout in the market â€” a perfect 10 in every way. Donâ€™t miss your opportunity to own this beautiful blend of modern living and timeless comfort.

Built in 2014

**Essential Information**

MLS® #	A2239432
Price	\$848,000
Bedrooms	5
Bathrooms	4.00
Full Baths	3
Half Baths	1
Square Footage	2,352
Acres	0.14
Year Built	2014
Type	Residential
Sub-Type	Detached
Style	2 Storey
Status	Active

**Community Information**

Address	137 Rainbow Falls Heath
Subdivision	Rainbow Falls

City	Chestermere
County	Chestermere
Province	Alberta
Postal Code	T1X 0N4

### Amenities

Parking Spaces	4
Parking	Double Garage Attached
# of Garages	2

### Interior

Interior Features	Kitchen Island, Pantry, Vaulted Ceiling(s)
Appliances	Central Air Conditioner, Dishwasher, Electric Stove, Garage Control(s), Refrigerator, Window Coverings
Heating	Forced Air
Cooling	Central Air
Fireplace	Yes
# of Fireplaces	1
Fireplaces	Gas
Has Basement	Yes
Basement	Finished, Full

### Exterior

Exterior Features	Fire Pit, Private Yard
Lot Description	Few Trees, Landscaped, Low Maintenance Landscape, Private, Rectangular Lot
Roof	Asphalt Shingle
Construction	Wood Frame
Foundation	Poured Concrete

### Additional Information

Date Listed	July 14th, 2025
Days on Market	3
Zoning	R1

### Listing Details

Listing Office	Real Broker
----------------	-------------

Data is supplied by Pillar 9â„¢ MLSÂ® System. Pillar 9â„¢ is the owner of the copyright in its MLSÂ® System. Data is deemed reliable but is not guaranteed accurate by Pillar 9â„¢. The trademarks MLSÂ®, Multiple Listing ServiceÂ® and the associated logos are owned by The Canadian Real Estate Association (CREA) and identify the quality of services

provided by real estate professionals who are members of CREA. Used under license.