

# \$449,400 - 460 Rainbow Falls Drive, Chestermere

MLS® #A2236708

**\$449,400**

3 Bedroom, 3.00 Bathroom, 1,390 sqft  
Residential on 0.05 Acres

Rainbow Falls, Chestermere, Alberta

NO Condo Fees | Private Fenced Yard |  
Double Detached Garage â€“ Welcome to  
Rainbow Falls!

This beautifully maintained 3-bedroom,  
3.5-bathroom townhouse in the heart of  
Rainbow Falls, Chestermere offers the perfect  
combination of style, space, and freedom from  
condo fees!

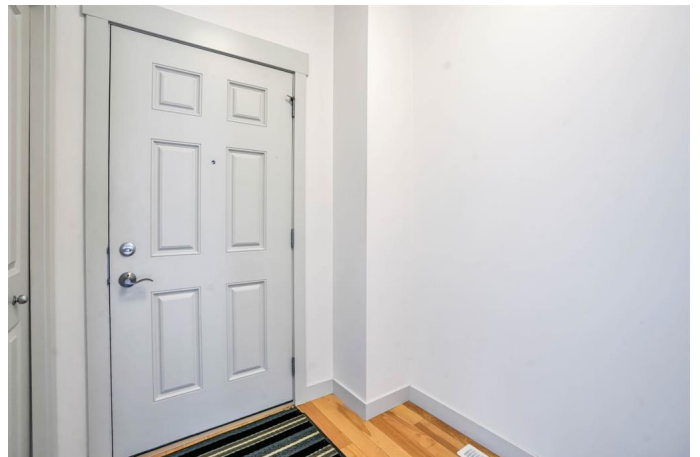
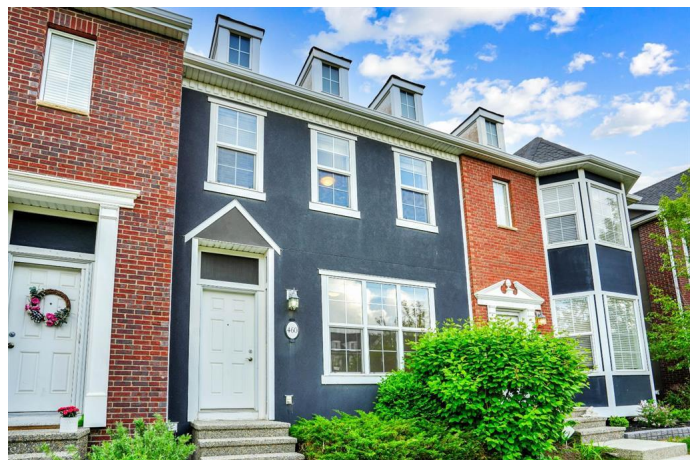
Enjoy a bright, open-concept main floor  
featuring a spacious living area, a modern  
kitchen with plenty of counter space, and a  
convenient half-bathâ€”ideal for everyday  
living and entertaining.

Upstairs, the primary suite provides a private  
retreat with a 4-piece ensuite, while two  
additional bedrooms and a full bath offer  
space for family, guests, or a home office.  
Step outside and fall in love with your private  
fenced yardâ€”perfect for barbecues, kids,  
pets, or a quiet morning coffee. The double  
detached garage offers secure parking, extra  
storage, and added convenience year-round.  
The unfinished basement is a blank slate  
waiting for your personal touchâ€”create the  
rec room, gym, or workspace youâ€™ve  
always wanted.

Located in a peaceful, family-friendly  
neighborhood close to scenic walking paths,  
schools, parks, shopping, and all that  
Chestermere has to offer.

No Condo Fees â€“ Keep your monthly costs  
down

Private Fenced Yard â€“ Space and privacy



youâ€™ll love  
Detached Double Garage â€“ Room for  
vehicles, toys, and tools  
3 Beds | 3.5 Baths | Bright and Open Layout  
Unfinished Basement â€“ Tons of future  
potential  
Donâ€™t miss this rare opportunity to own a  
freehold townhouse in a sought-after  
community. Book your showing today and take  
the next step toward homeownership with  
confidence!

Built in 2013

**Essential Information**

MLS® #	A2236708
Price	\$449,400
Bedrooms	3
Bathrooms	3.00
Full Baths	2
Half Baths	1
Square Footage	1,390
Acres	0.05
Year Built	2013
Type	Residential
Sub-Type	Row/Townhouse
Style	2 Storey
Status	Active

**Community Information**

Address	460 Rainbow Falls Drive
Subdivision	Rainbow Falls
City	Chestermere
County	Chestermere
Province	Alberta
Postal Code	T1X 0L8

**Amenities**

Parking Spaces	2
Parking	Alley Access, Double Garage Detached

# of Garages 2

### Interior

Interior Features Granite Counters, Kitchen Island, Pantry, Vinyl Windows  
Appliances Dishwasher, Microwave Hood Fan, Refrigerator, Stove(s), Washer/Dryer  
Heating Forced Air, Natural Gas  
Cooling None  
Has Basement Yes  
Basement Full, Unfinished

### Exterior

Exterior Features Private Yard  
Lot Description Back Lane, Back Yard, Landscaped, Lawn, See Remarks  
Roof Asphalt Shingle  
Construction Stucco, Wood Frame  
Foundation Poured Concrete

### Additional Information

Date Listed July 3rd, 2025  
Days on Market 10  
Zoning R3

### Listing Details

Listing Office RE/MAX Complete Realty

Data is supplied by Pillar 9â„¢ MLSÂ® System. Pillar 9â„¢ is the owner of the copyright in its MLSÂ® System. Data is deemed reliable but is not guaranteed accurate by Pillar 9â„¢. The trademarks MLSÂ®, Multiple Listing ServiceÂ® and the associated logos are owned by The Canadian Real Estate Association (CREA) and identify the quality of services provided by real estate professionals who are members of CREA. Used under license.