

# \$289,999 - 1101, 1140 Taradale Drive Ne, Calgary

MLS® #A2226433

**\$289,999**

2 Bedroom, 2.00 Bathroom, 981 sqft

Residential on 0.00 Acres

Taradale, Calgary, Alberta

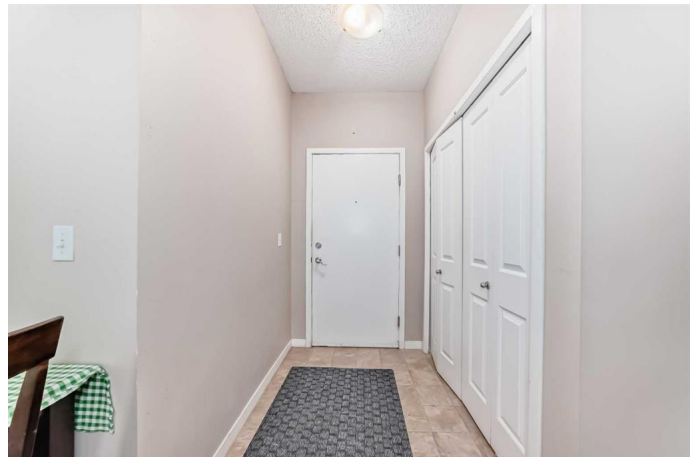
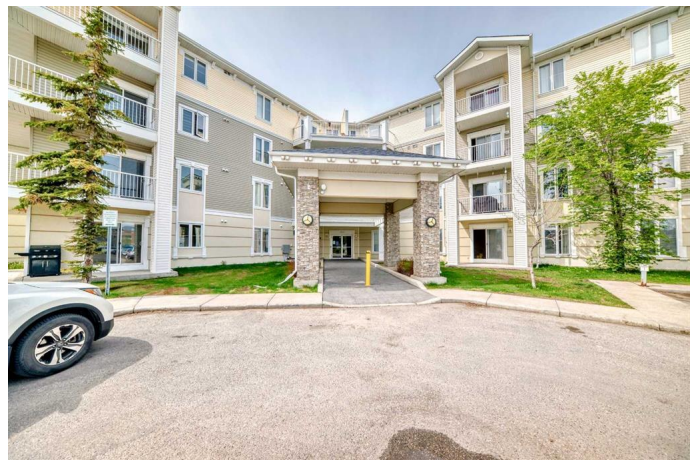
WOW!!! PRICED FOR QUICK SALE MAIN FLOOR UNIT, 2 BEDROOM PLUS DEN, ONE OF THE LARGEST IN UNIT THE COMPLEX. MANY UPGRADES, 9FT CEILING, MASTER WITH FULL EN-SUITE AND WALK-IN CLOSET, IN-SUITE STACK UP LAUNDRY, ASSIGNED PARKING STALL, SLIDING DOORS TO CONCRETE PATIO, VERY CONVENIENT LOCATION. GREAT OPPORTUNITY FOR FIRST TIME BUYERS, SENIORS AND OR INVESTORS. CONDO FEES INCLUDES ALL UTILITIES EXCEPT PHONE AND CABLE. BOOK YOUR SHOWING NOW

Built in 2007

## Essential Information

MLS® #	A2226433
Price	\$289,999
Bedrooms	2
Bathrooms	2.00
Full Baths	2
Square Footage	981
Acres	0.00
Year Built	2007
Type	Residential
Sub-Type	Apartment
Style	Single Level Unit
Status	Active

## Community Information



Address	1101, 1140 Taradale Drive Ne
Subdivision	Taradale
City	Calgary
County	Calgary
Province	Alberta
Postal Code	T3J 0G1

### **Amenities**

Amenities	Park, Snow Removal, Visitor Parking, Laundry, Playground
Parking Spaces	1
Parking	Stall

### **Interior**

Interior Features	No Animal Home, No Smoking Home, Vinyl Windows
Appliances	Dishwasher, Electric Stove, Range Hood, Washer/Dryer
Heating	Central
Cooling	None
# of Stories	4

### **Exterior**

Exterior Features	Balcony
Construction	Wood Frame

### **Additional Information**

Date Listed	May 31st, 2025
Days on Market	16
Zoning	M-2 d86

### **Listing Details**

Listing Office	MaxValue Realty Ltd.
----------------	----------------------

Data is supplied by Pillar 9â„¢ MLSÂ® System. Pillar 9â„¢ is the owner of the copyright in its MLSÂ® System. Data is deemed reliable but is not guaranteed accurate by Pillar 9â„¢. The trademarks MLSÂ®, Multiple Listing ServiceÂ® and the associated logos are owned by The Canadian Real Estate Association (CREA) and identify the quality of services provided by real estate professionals who are members of CREA. Used under license.