

\$2,299,900 - 83 Lissington Drive Sw, Calgary

MLS® #A2219179

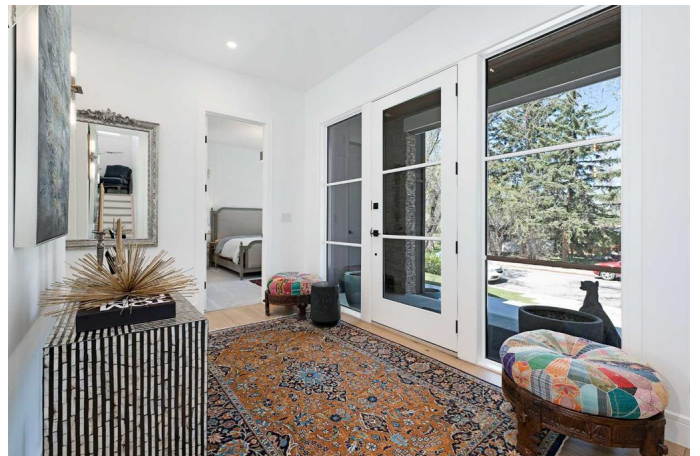
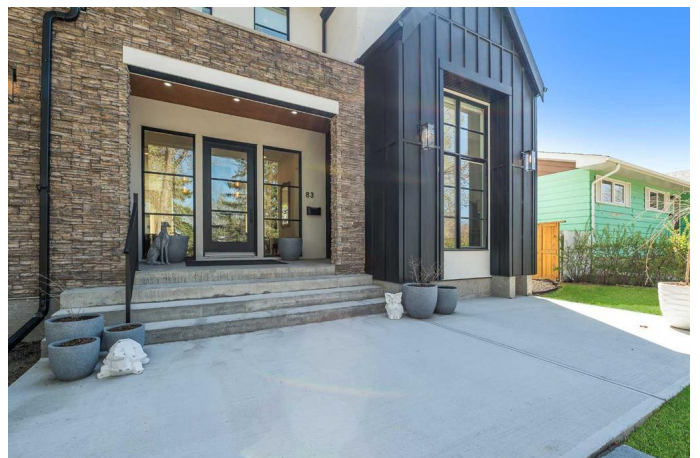
\$2,299,900

5 Bedroom, 6.00 Bathroom, 3,162 sqft

Residential on 0.14 Acres

North Glenmore Park, Calgary, Alberta

Captivating custom 4+1 bedroom home in the mature community of North Glenmore Park offering over 4600 sq ft of developed living space. The airy main level presents hardwood floors, high ceilings & is drenched in natural light, showcasing a living room anchored by a feature fireplace & gracious dining area with dry bar that's illuminated by a stylish fixture. Create culinary delights in the stunning kitchen that's beautifully finished with quartz counter tops, island/eating bar, abundant storage space & stainless steel appliances. The addition of a butler's pantry with prep counter, additional storage & sink plus a built-in desk is an added convenience. A private office is tucked away just off the foyer – perfect for a home office setup. Completing the main are a bedroom/flex space/second den with 3 piece ensuite & a 2 piece powder room. The second level hosts a bonus room with dry bar/beverage centre, 3 bedrooms (each with a private ensuite) & laundry room with sink & storage. The primary retreat is a private oasis, boasting a custom walk-in closet & luxurious 5 piece ensuite featuring a lovely oak vanity with dual sinks, relaxing freestanding soaker tub & oversized shower. Basement development is roughed in for in-floor heat & includes large family & games rooms & a comfortable sitting area that's roughed-in for conversion to a media room. The finishing touches to the basement are an exercise room plus fifth bedroom with walk-in closet & direct access to



the 3 piece bath that is roughed-in for a steam shower. Other notable features include roughed-in A/C & exterior cameras & built-in speakers. Outside, enjoy the PRIVATE SOUTH BACK YARD with large deck & outdoor gas fireplace – perfect for relaxing or outdoor entertaining. Parking is a breeze with a double attached garage. The location is incredibly convenient, close to tranquil North Glenmore Park, Glenmore Athletic Park, Earl Grey Golf Club, schools, shopping, public transit & easy access to Crowchild & Glenmore Trails.

Built in 2021

Essential Information

MLS® #	A2219179
Price	\$2,299,900
Bedrooms	5
Bathrooms	6.00
Full Baths	5
Half Baths	1
Square Footage	3,162
Acres	0.14
Year Built	2021
Type	Residential
Sub-Type	Detached
Style	2 Storey
Status	Active

Community Information

Address	83 Lissington Drive Sw
Subdivision	North Glenmore Park
City	Calgary
County	Calgary
Province	Alberta
Postal Code	T3E 5E4

Amenities

Parking Spaces	2
Parking	Double Garage Attached, Oversized
# of Garages	2

Interior

Interior Features	Breakfast Bar, Built-in Features, Chandelier, Closet Organizers, Double Vanity, High Ceilings, Kitchen Island, Pantry, Quartz Counters, Soaking Tub, Walk-In Closet(s), Bookcases, Central Vacuum, Dry Bar, Recessed Lighting, Wired for Sound
Appliances	Built-In Oven, Dishwasher, Dryer, Garage Control(s), Microwave, Range Hood, Refrigerator, Washer, Window Coverings, Bar Fridge, Gas Cooktop
Heating	Forced Air
Cooling	Rough-In
Fireplace	Yes
# of Fireplaces	2
Fireplaces	Gas
Has Basement	Yes
Basement	Finished, Full

Exterior

Exterior Features	Lighting, Private Entrance, Private Yard
Lot Description	Back Lane, Back Yard, Front Yard, Landscaped, Lawn, Rectangular Lot
Roof	Asphalt Shingle
Construction	Composite Siding, Stone, Wood Siding, Stucco
Foundation	Poured Concrete

Additional Information

Date Listed	May 8th, 2025
Days on Market	39
Zoning	R-CG

Listing Details

Listing Office	RE/MAX First
----------------	--------------

Data is supplied by Pillar 9â„¢ MLS® System. Pillar 9â„¢ is the owner of the copyright in its MLS® System. Data is deemed reliable but is not guaranteed accurate by Pillar 9â„¢. The trademarks MLS®, Multiple Listing Service® and the associated logos are owned by The Canadian Real Estate Association (CREA) and identify the quality of services provided by real estate professionals who are members of CREA. Used under license.